

**INDUSTRIAL
BIMETAL THERMOMETER
MODEL : T110**

WISE[®]

SERVICE INTENDED

Bimetal Thermometer is used for measuring temperature of gas or liquid fluid.

This is suitable for measurement, regulation and direct monitoring of the fluid, and meets the most stringent criteria on resistance to a corrosive atmosphere and exceptional climatic circumstance.

NOMINAL DIAMETER

50, 63, 75, 100, 125, and 150mm

ACCURACY

±1.0% of Full Scale

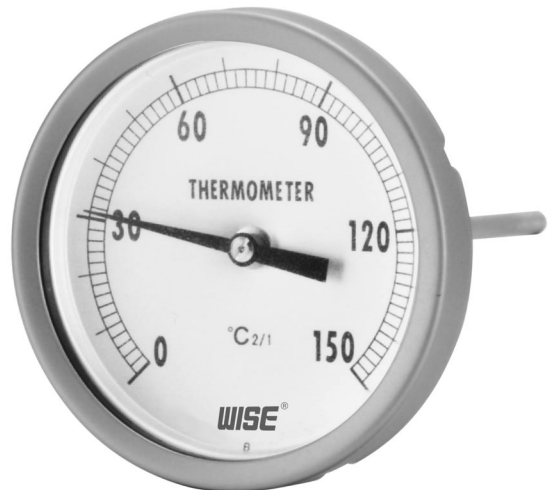
±2.0% of Full Scale

TEMPERATURE ELEMENT

Coiled Bimetal

WORKING RANGE

Maximum Scale Value



TD01 - 01

Standard Features

LOCATION OF STEM

Centre Back Connection, Direct

CASE

304SS

COVER

304SS

WINDOW

Glass

DIAL

White Aluminium with
Black Graduations

POINTER

Black Aluminium

STEM

6.0, 6.4, 8.0 and 10.0mm Diameter
304SS and 316SS

Max. Stem length : 2000mm

ZERO ADJUSTMENT

By resetting the pointer after removing
the cover.

STEM CONNECTION

1/4", 3/8", 1/2", 3/4" PT or NPT

ORDERING INFORMATION

BASE MODEL

T110 : INDUSTRIAL BIMETAL THERMOMETER

NOMINAL DIAMETER

- 1 : 50mm
- 2 : 63mm
- 3 : 75mm
- 4 : 100mm
- 5 : 125mm
- 6 : 150mm

TYPE OF MOUNTING

X : Centre Back Connection, Direct

STEM MATERIAL

- 0 : 304SS
- 1 : 316SS

PROCESS CONNECTION

- C : 1/4"
- D : 3/8"
- E : 1/2"
- E : 3/4"

CONNECTION TYPE (CF : Compression Fitting)

- C : PT
- D : NPT
- E : CF+PT
- E : CF+NPT

STEM OUT DIA.

- 0 : 6.0mm
- 1 : 6.4mm
- 2 : 8.0mm
- 3 : 10.0mm

RANGE(Refer to Scale Range Table)

XXX

STEM LENGTH

(Refer to Stem Length Table)

X

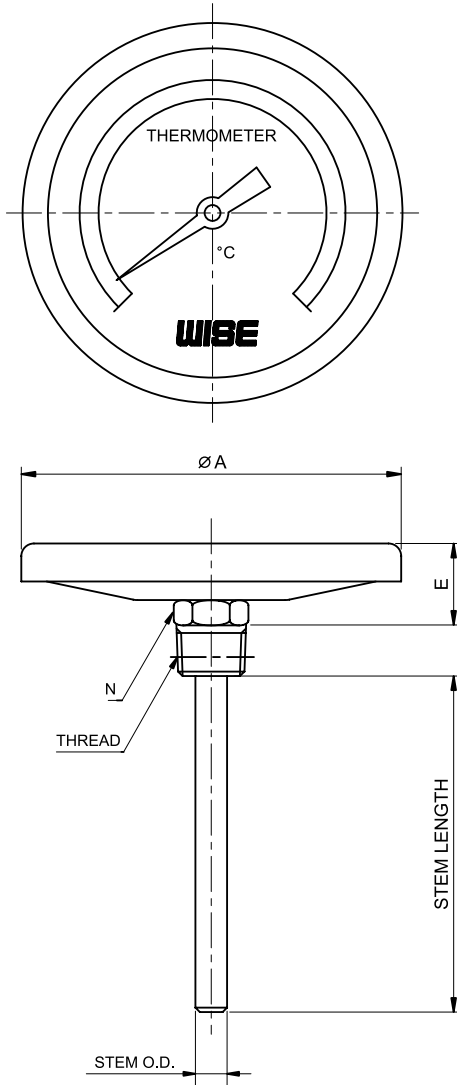
ACCESSORIES

- 0 : None
- 1 : Thermowell

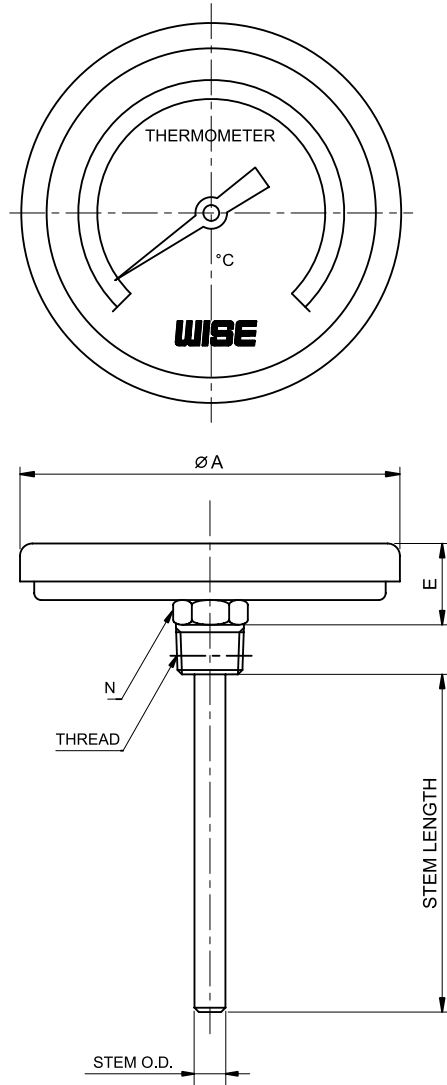
| | | | | | | | | | | |
|------|---|---|---|---|---|---|-----|---|---|---------------------|
| T110 | 3 | X | 0 | E | C | 1 | XXX | X | 1 | SAMPLE MODEL NUMBER |
|------|---|---|---|---|---|---|-----|---|---|---------------------|

T110 : TYPE OF MOUNTING

CODE X



CODE X*



Dimensions (mm)

| DIAL SIZE | AVAILABLE CODE | A | E | N |
|-----------|----------------|-------|------|-------------|
| 50 | X | 50 | 23.5 | 24x27.7 HEX |
| 65 | X | 65 | 28.5 | 24x27.7 HEX |
| 75 | X | 85.4 | 33 | 24x27.7 HEX |
| 100 | X | 111 | 32 | 24x27.7 HEX |
| 125 | X | 139 | 34 | 24x27.7 HEX |
| 150 | X* | 168.5 | 41 | 24x27.7 HEX |

SCALE RANGES

| Code | Scale Range (°C) | Scale Spacing(°C) | Minimum Stem Length (mm) | |
|------|------------------|-------------------|--------------------------|--------------|
| | | | 6.4 | 8.0 and 10.0 |
| 032 | -50~50 | 2 | 55 | 50 |
| 037 | -50~100 | 5 | 45 | 35 |
| 054 | -30~50 | 2 | 70 | 60 |
| 059 | -30~100 | 5 | 50 | 45 |
| 061 | -30~120 | 2 | 45 | 35 |
| 069 | -20~50 | 2 | 80 | 70 |
| 074 | -20~100 | 2 | 45 | 45 |
| 079 | -20~150 | 5 | 40 | 35 |
| 084 | -10~50 | 1 | 95 | 80 |
| 099 | 0~50 | 1 | 110 | 70 |
| 100 | 0~60 | 1 | 95 | 80 |
| 101 | 0~70 | 2 | 80 | 60 |
| 102 | 0~80 | 1 | 70 | 90 |
| 104 | 0~100 | 2 | 55 | 50 |
| 106 | 0~120 | 2 | 50 | 45 |
| 109 | 0~150 | 2 | 45 | 35 |
| 114 | 0~200 | 5 | 35 | 35 |
| 119 | 0~250 | 5 | 35 | 30 |
| 124 | 0~300 | 5 | 35 | 25 |
| 129 | 0~350 | 5 | 30 | 25 |
| 134 | 0~400 | 5 | 80 | 65 |
| 144 | 0~500 | 10 | 70 | 60 |
| 154 | 0~600 | 10 | 70 | 60 |

STEM LENGTH

| Code | 1 | 2 | 3 | 4 | 5 | 6 | 7 | 8 | 9 | A | B | C |
|------------|----|----|----|----|-----|-----|-----|-----|-----|-----|-----|-----|
| Length(mm) | 50 | 60 | 70 | 80 | 100 | 120 | 130 | 150 | 175 | 200 | 225 | 250 |

| Code | D | E | F | G | H | J | K | L | M | N | P | Z |
|------------|-----|-----|-----|-----|-----|-----|-----|-----|------|------|------|------------------|
| Length(mm) | 275 | 300 | 350 | 375 | 400 | 450 | 500 | 550 | 1000 | 1500 | 2000 | Longer than 2000 |