

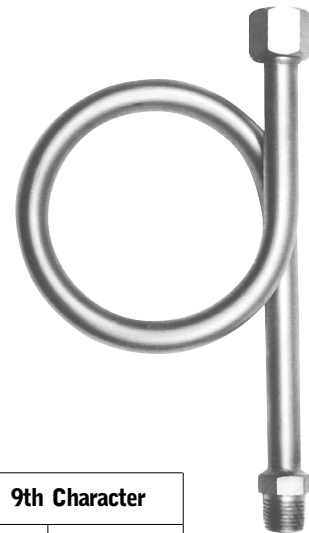
SYPHON TUBE MODEL : A030



AD01 - 03

SERVICE INTENDED

It is used for protecting the pressure gauge from the effect of hot process media like steam and also reducing the effect of rapid pressure surges.



ORDERING INFORMATION

BASE MODEL - 1st thru 4th characters
A030 : SYPHON TUBE

5th Character		6th Character		7th Character		8th Character		9th Character	
Code	Type	Code	Material	Code	Gauge Connection Size	Code	Gauge Connection Type	Code	Process Connection Size
B	Winding	B	S25C	0	1/4"	A	PF(F)	B	1/4"
C	Pig Tail	C	304SS	1	3/8"	B	PT(F)	C	3/8"
		D	316SS	2	1/2"	C	NPT(F)	D	1/2"
		F	316LSS	3	3/4"	H	NPS(F)	E	3/4"
		E	321SS					F	1"
		H	HAST-C	6	1"			Q	Flange
		Z	Other	9	Other	Z	Other	Z	Other

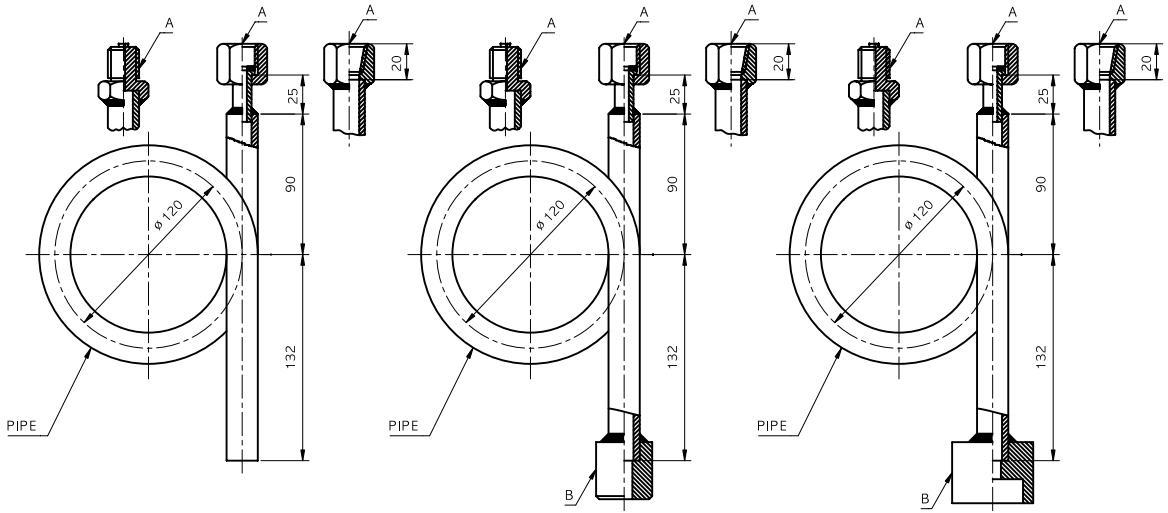
10th Character		11th Character		12th Character		13th thru 15th Characters	
Code	Process Connection Type	Code	Flange Size	Code	Flange Rating	Code	Pipe Schedule
C	NPT(F)	A	N/A	A	N/A	000	3/8"sch40(17.3 ϕ \times 2.3t)
G	PF(M)	D	1/2"(15A)	B	ANSI 150# RF	100	3/8"sch80(17.3 ϕ \times 3.2t)
H	PT(M)	E	3/4"(20A)	C	ANSI 150# FF		
J	NPT(M)	J	2" (50A)	D	ANSI 150# RFSF	200	1/2"sch40(21.7 ϕ \times 2.8t)
N	S,W	F	1" (25A)	E	ANSI 300# RF		
P	Pipe Welding	G	1 1/4"(32A)	F	ANSI 300# FF	300	1/2"sch80(21.7 ϕ \times 3.7t)
Q	Flange	H	1 1/2"(40A)	G	ANSI 300# RFSF		
			2" (50A)	H	ANSI 600# RF	400	3/4"sch40(27.2 ϕ \times 2.9t)
				J	ANSI 600# FF		
				K	ANSI 600# RFSF	500	3/4"sch80(27.2 ϕ \times 3.9t)
				L	JIS 10K RF		
				M	JIS 10K FF	600	1/2"sch160(21.7 ϕ \times 4.7t)
				N	JIS 10K RFSF		
				P	JIS 20K RF		
				Q	JIS 20K FF		
				R	JIS 20K RFSF		
				S	JIS 30K RF		
				T	JIS 30K FF		
				U	JIS 30K RFSF		
				V	JIS 40K RF		
				W	JIS 40K FF		
				X	JIS 40K RFSF		
Z	Other	Z	Other	Z	Other		

A030BC1CDPAA000 SAMPLE ORDERING NUMBER

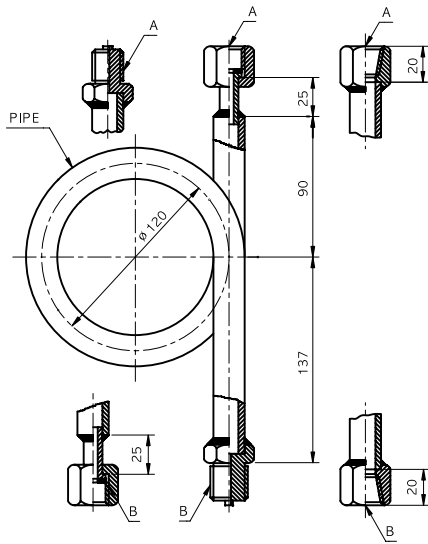
A030 : SYPHON TUBE (1/2)

AD01 - 03

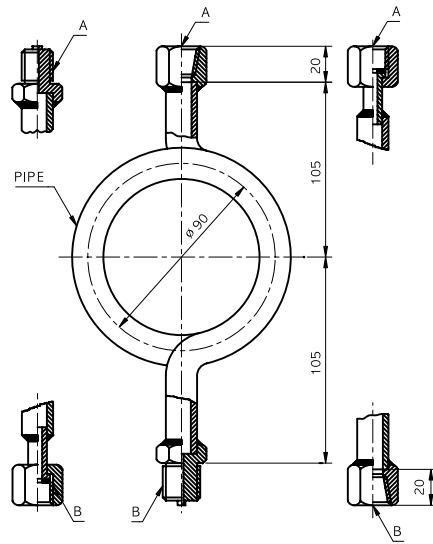
CODE B



CODE B*



CODE C

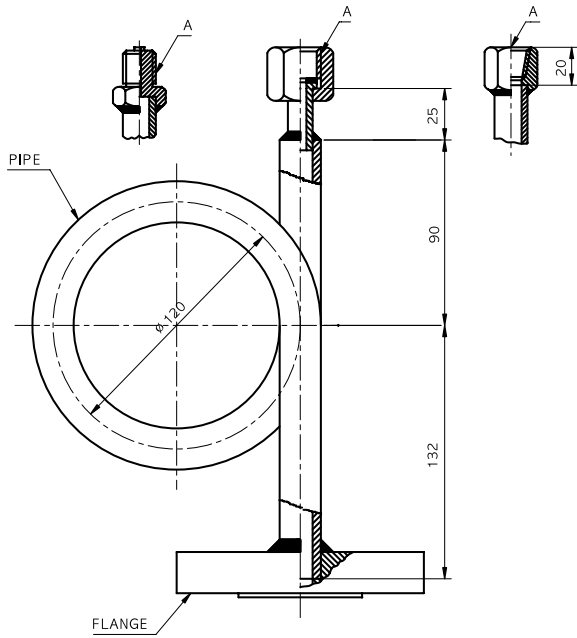


Dimensions (mm)

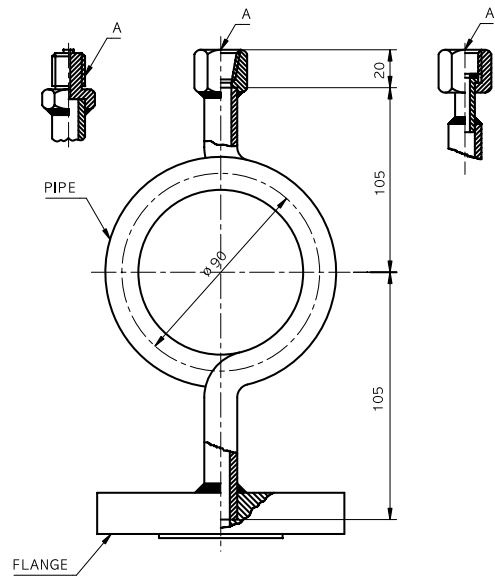
CODE	PIPE	A	B
B B*	ø 17.3 X 2.3t ø 17.3 X 3.2t ø 21.7 X 2.8t ø 21.7 X 3.7t	PF 3/8	P.E (M)
		PF 1/2	P.E (F)
		PT 3/8	PF 3/8
		PT 1/2	PF 1/2
		NPT 3/8	PT 3/8
		NPT 1/2	PT 1/2
C	ø 10.5 X 2.0t	NPT 3/8	NPT 1/2

A030 : SYPHON TUBE (2/2)

CODE B



CODE C



Dimensions (mm)

CODE	PIPE	A	FLANGE RATING			
B	$\phi 17.3 \times 2.3t$ $\phi 17.3 \times 3.2t$ $\phi 21.7 \times 2.8t$ $\phi 21.7 \times 3.7t$	PF 3/8 PF 1/2 PT 3/8 PT 1/2 NPT 3/8 NPT 1/2	JIS	10,16,20, 30,40K	15,20,25,	FF
					32,40,50A	RF
			ANSI (JPI)	150,300LB	1/2,3/4,1,	FF
					1 1/4,1 1/2,2B	RF
C	$\phi 10.5 \times 2.0t$					