

## ULTRA HIGH PURITY PRESSURE GAUGE WITH TRANSMITTER MODEL : PT840 Series

# WISE®

### SERVICE INTENDED

The PT840 Series specifically designed for ultra high purity gas distribution system used in semiconductor industry and electronic, medical, biotechnology, pharmaceutical industry.

### NOMINAL DIAMETER

50mm ( 2" )

### GAUGE ACCURACY

± 1.0% of full scale

### TRANSMITTER ACCURACY

± 0.25% of full scale

### SCALE RANGE

0.1Mpa vacuum to 25MPa

### WORKING PRESSURE

Steady pressure : 75% of full scale value

Fluctuating pressure : 67% of full scale value

### OPERATING TEMPERATURE

Ambient : -40°C to +60°C

Medium : +100°C maximum



## Standard Features

### MECHANICAL

#### PRESSURE CONNECTION

Type 316L Stainless steel electropolished  
low mount or center back mount  
surface finish  $Ra \leq 0.25 \mu\text{m}$   
- 1/4 inch NPT male thread  
- VCR® male or female face seal fitting

#### PRESSURE ELEMENT

Type 316L Stainless steel  
<6MPa : C-type bourdon tube  
≥ 6MPa : helical type bourdon tube

#### MOVEMENT

Type 304 Stainless steel

#### DIAL

White aluminum, with pointer stop pin  
With black/red lettering, dual pressure scale (bar/psi)

#### POINTER

Black aluminum pointer

#### RING AND WINDOW

Twist-lock polycarbonate

#### CASE

Type 304 Stainless steel,  
electropolished with pressure relief

#### HELIUM LEAK RATE

Tested to confirm leakage rates of less than  
 $10^{-9}$  mbar • l /sec

### ELECTRICAL

#### CONNECTION

26 AWG, Teflon insulated, 10 feet leads  
( 2 black wires )

#### OUTPUT

4-20mA, 2 wire system

#### POWER

DC 24V

# ORDERING INFORMATION

## BASE MODEL

**PT840** : Ultra high purity pressure gauge with transmitter

### NOMINAL DIAMETER

1 : 50mm ( 2" )

### MOUNTING

A : Low mount ( LM )

### ACCURACY

3 : 1.0 Class

### CONNECTION TYPE

CD : 1/4" NPT ( male )  
SF : Swivel female face seal  
SM : Swivel male face seal  
FM : Fixed male face seal

### UNIT

H : bar  
I : MPa

### RANGE

Refer to Range Table

### PRESSURE CONNECTION

#### MAT'L & DAILS

4 : 316LSS & 2 Colors  
8 : 316LSS & 3 Colors

### OPTIONS

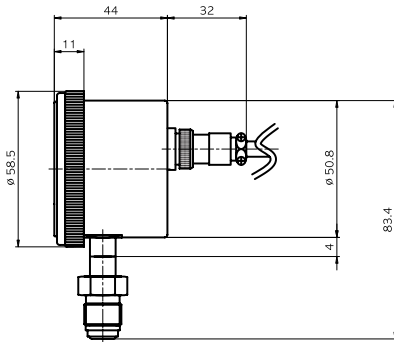
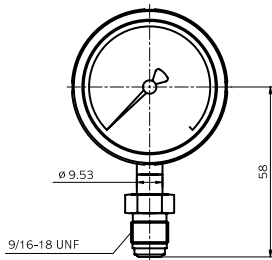
0 : None  
1 : Accessories



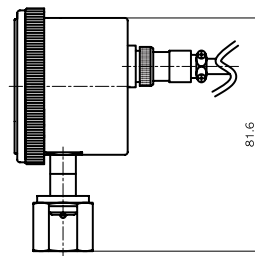
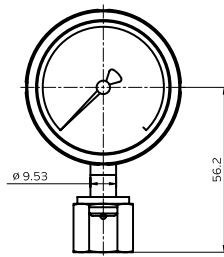
**SAMPLE  
MODEL  
NUMBER**

# PT840 : TYPE OF MOUNTING

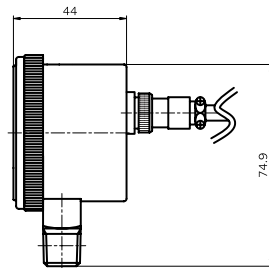
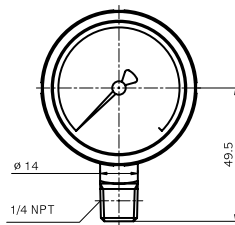
ø 50( 2" ) Low mount



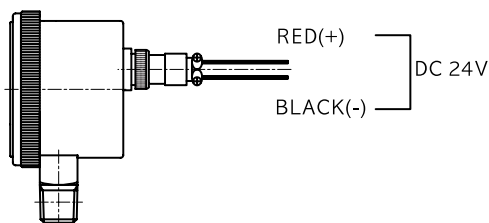
SWIVEL MALE



SWIVEL FEMALE



NPT MALE



WIRE CONNECTION

## RANGE TABLE

RANGE & CODE	UNIT & CODE		NOMINAL DIAMETER	
	H : bar	I : MPa	50mm	63mm
026	-1	-0,1	○	○
040	0,5	0,05	×	×
041	1	0,1	○	×
133	1,6	0,16	○	○
042	2	0,2	○	×
134	2,5	0,25	○	○
043	3	0,3	○	×
044	4	0,4	○	○
045	6	0,6	○	○
047	10	1	○	○
050	15	1,5	○	×
143	16	1,6	○	○
051	20	2	○	×
052	25	2,5	○	○
054	35	3,5	○	×
151	40	4	○	○
055	50	5	○	×
056	60	6	○	○
057	70	7	○	×
058	100	10	○	○
059	150	15	○	×
060	160	16	○	○
062	250	25	○	○
027	+1	+0,1	○	×
127	-1~1,6	-0,1~0,16	○	○
028	-1~2	-0,1~0,2	○	×
129	-1~2,5	-0,1~0,25	○	○
029	-1~3	-0,1~0,3	○	○
030	-1~4	-0,1~0,4	○	×
010	-1~5	-0,1~0,5	○	○
031	-1~6	-0,1~0,6	○	×
014	-1~9	-0,1~0,9	○	○
032	-1~10	-0,1~1	○	×
033	-1~15	-0,1~1,5	○	○
034	-1~20	-0,1~2	○	×
035	-1~25	-0,1~2,5	×	×

○ : AVAILABLE × : NOT AVAILABLE