

PROCESS INDUSTRY PRESSURE GAUGE MODEL : P330 SERIES

WISE®

SERVICE INTENDED

P330 Series are designed for petroleum and chemical processing industries.

NOMINAL DIAMETER

150mm

ACCURACY

150mm : $\pm 1.0\%$ of Full Scale

SCALE RANGE (MPa, kPa, bar)

-0.1MPa ~ 0 to 0 ~ 200MPa

WORKING PRESSURE

Steady : 75% of Full Scale

Over Range Protection : 130% of Full Scale

WORKING TEMPERATURE

Ambient : -20 ~ 65°C

Fluid : +200°C maximum



Standard Features

PRESSURE CONNECTION

Stainless Steel (316SS)

ELEMENT

Stainless Steel (316SS)

<10MPa : C type Bourdon Tube

≥ 10 MPa : Helical Type Bourdon Tube

CASE

Black Finished Aluminium

COVER

Black Finished Aluminium

WINDOW

Glass

MOVEMENT

Stainless Steel

DIAL

White Aluminium with Black Graduations

POINTER

Aluminium alloy, Black painted

PROCESS CONNECTION

150mm : 3/8", 1/2" PT, NPT & PF

ORDERING INFORMATION

BASE MODEL

P330 : PROCESS INDUSTRY PRESSURE GAUGE

NOMINAL DIAMETER

6 : 150mm

MOUNTING TYPE (Refer to Mounting type & Dimension)

- A : Bottom Connection, Direct
- B : Bottom Connection, Surface, Case Mounting Plate
- G : Lower Back Connection, Direct
- M : Lower Back Connection, Flush, Case Center Mounting Bracket

ACCURACY

3 : ±1.0% of Full Scale

CONNECTION

- D : 3/8"
- E : 1/2"

CONNECTION TYPE

- B : PF
- C : PT
- D : NPT

UNIT

Refer to Pressure Unit & Range Table

RANGE

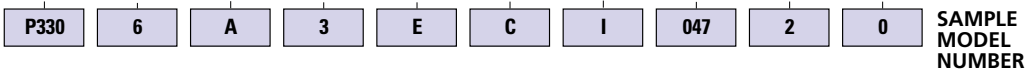
Refer to Pressure Unit & Range Table

DIAL COLOR

- 2 : 2 Colors
- Z : 3 Colors, Available with Compound & Vacuum Gauges

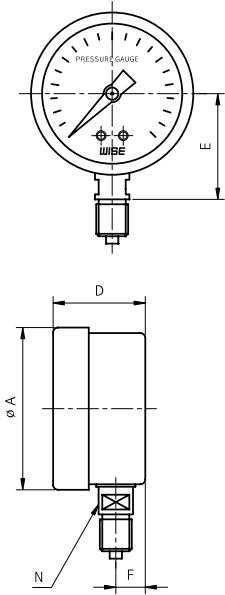
ACCESSORIES

- 0 : None
- 1 : Accessories

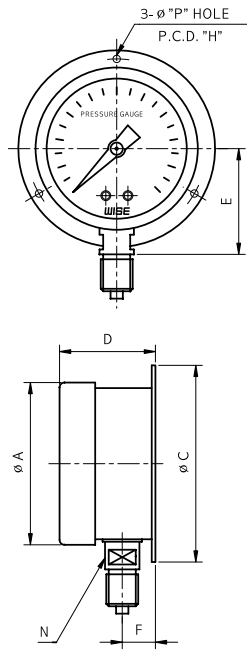


P330 : TYPE OF MOUNTING

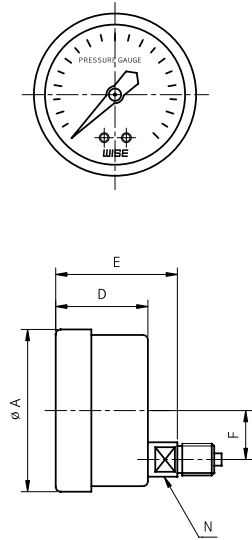
CODE A



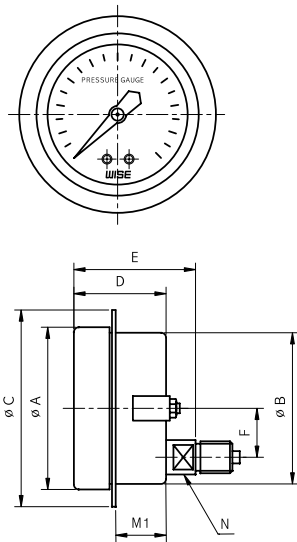
CODE B



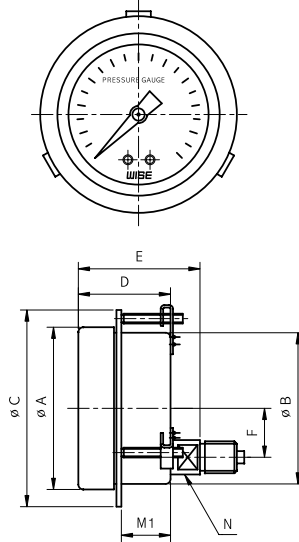
CODE G



CODE M



CODE M*



Dimensions (mm)

DIAL SIZE	AVAILABLE CODE	A	B	C	D	E	F	H	M1	N	P
150	A	172			62	101.5	21			17	
	B	172		184	62	101.5	21	172		17	5.5
	G	172			62	77.8	55			17	
	M*	172	159	184	62	77.8	55		35	17	

PRESSURE UNIT & RANGE TABLE

RANGE & CODE	UNIT & CODE			NOMINAL DIAMETER	
	H : bar	I : MPa	J : kPa	75mm	150mm
026	-1	-0.1	-100	○	○
040	0,5	0,05	50	X	○
041	1	0,1	100	○	○
133	1,6	0,16	160	○	○
042	2	0,2	200	○	○
134	2,5	0,25	250	○	○
043	3	0,3	300	○	○
044	4	0,4	400	○	○
045	6	0,6	600	○	○
047	10	1	1000	○	○
050	15	1,5	-	○	○
143	16	1,6	-	○	○
051	20	2	-	○	○
052	25	2,5	-	○	○
054	35	3,5	-	○	○
151	40	4	-	○	○
055	50	5	-	○	○
056	60	6	-	○	○
057	70	7	-	○	○
058	100	10	-	○	○
059	150	15	-	○	○
060	160	16	-	○	○
062	250	25	-	○	○
064	350	35	-	X	○
065	400	40	-	X	○
066	500	50	-	X	○
067	600	60	-	X	○
068	700	70	-	X	○
070	1000	100	-	X	○
074	1600	160	-	X	○
075	2000	200	-	X	○

○ : AVAILABLE × : NOT AVAILABLE